

**PRACTICAL PROCEDURES TO
GENERATE SPEECH PRODUCTION**

(Please type or print clearly,
photocopies accepted)

Name: _____

Discipline: _____

Organization: _____

Address: _____

Postal Code: _____

Business Phone: _____

Email: _____

Include your cheque or money order with
your completed registration

*Would you like your name and (org.)
address to be added to a participants list?*

Yes

No

**REGISTRATION AND
GENERAL INFORMATION**

Seating is limited to 75 participants.
Registration will be confirmed once your
payment is received. A one day rate is
not available.

Early Registration (to Aug.31) \$275.00
Regular Registration \$300.00

Fee includes all meals and refreshments,
and conference materials.

*Please make your cheque/money order
payable to:*

COMMUNITY SPEECH SERVICES

Mail payment with registration form to:

**Community Speech Services,
11811 Tecumseh Rd.E., Suite 108
Tecumseh, Ontario N8N 4M7**

For further information please contact:

Helga Schollenberger @ 519-979-7099
Email: Helga@communityspeech.ca

Or

Cheryl Thoms @ 519-979-7099
Email: Cheryl@communityspeech.ca

Kindly type 'Boshart workshop' in subject
line if communicating by email.

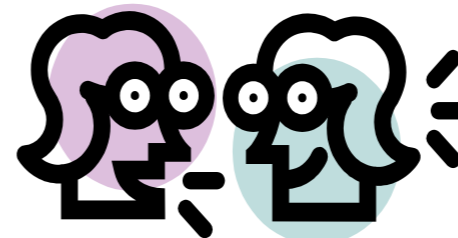
Our Speaker:

*Charlotte A. Boshart, M.A., is a therapist,
seminar presenter, and founder and
president of Speech Dynamics, Inc. She
received her Masters Degree from West-
ern Michigan University. Since that time,
she has been an Assistant Professor and
Department Chair of Loma Linda Univer-
sity, a therapist in the public schools, a
private practitioner, seminar presenter,
and published author.*

Ms. Boshart has presented hundreds of
well-received seminars nationally to
many speech pathologists, occupational
therapists, and dedicated parents.

Ms. Boshart is a consummate speaker,
and her presentation style is exhilarating.
She offers unique, effective methods in a
clear, organized, and enjoyable manner.

She is the author of numerous publica-
tions, including "Articulation Remediation
Systems" , "Treatise on the Tongue",
"Oral-Facial Illustrations and Reference
Guide", "The Pacifier", and many other
booklets and training guides.



Is pleased to offer

**Practical Procedures
to Generate
Speech Development**

Charlotte A. Boshart, MA
Speech Dynamics, Inc.
Montgomery, Texas

October 1 and 2, 2009

At the

***Hilton Windsor
Windsor, Ontario***

Conference Location

Hilton Windsor
277 Riverside Drive W.
Windsor, ON,
519-973-5555
www.windsorhilton.com

Located 3 blocks west of Ouellette Ave. in downtown Windsor, Ontario
Parking (\$11.00/day) in garage or outdoor lots
Valet parking is available.

Accommodations

A block of rooms will be held until August 31, 2009 at a special rate of \$119.00 plus tax, per night at the Hilton Windsor. Mention you're with the *"community speech workshop"*

Cancellation Policy

Full refund, minus a \$25 administration fee will be given for cancellations received in writing or via email by September 18, 2009.
No refunds for cancellations received after Sept. 19, 2009.

Target Audience

This course is designed for speech pathologists.

Other Information:

To ensure your comfort, please wear layers which can be added or removed according to room temperature.

Practical Procedures to Generate Speech Development

You'll Learn

- Remediation Sequences for Articulation and Phonological Cases
- At least 40 Effective Oral-Facial Facilitation Activities
- A Practical, Thorough Oral-Mechanism Exam
- 25 Tasks to Establish Oral-Facial Resting Postures, and Why
- The Three Types of Tactile Sensory Therapy
- How To Generate Stabilization and Differentiation for Refined Oral Movements
- Cooperative Mouthing Methods to Get the Mouth Moving
- How To Transition from Oral-Motor Exercises to "Sound Stim."
- Sequential Therapy for the Distorted /r/ and the Frontal & Lateral /s/
- How to Achieve Sound-Solidification and Carryover



Practical Procedures to Generate Speech Development

Day One: A Full Day of Information, Analysis & Therapy

7:45: *Registration and light breakfast*
8:15 *Welcome and Introductions*

The Characteristics and Capabilities of Oral-Facial structures...

- Hard Tissue: Facial Index Analysis, dentition, hard palate; compensatory therapy
- Respiration and Resting Postures: Desirable and undesirable oral positioning; negative influences

10:00 *Nutrition Break*

- Soft Tissue: Lips and tongue musculature; strength, tone, endurance; stretching the restrictive lingual frenum
- Sensation: The Sensory-Motor Loop; sensory differences influence on movement

12:00– 1:00 *Lunch provided*

- Stabilization, differentiation and refinement of movement during speech
- Thumb sucking, tongue-sucking and pacifiers;
- Functional analysis of chewing and swallowing

3:30 *Adjourn*

Practical Procedures to Generate Speech Development

Day Two: A Complete Day of Therapy Techniques

8:00-8:30 *Light breakfast*

- Physiological Readiness Exercises (PRE Therapy), and Service Delivery Models
- Three forms of sensory therapy and how to apply Sensory Assists
- Generating oral movement via Cooperative Mouthing

10:00-10:15 *Nutrition Break*

- Using sucking & blowing to facilitate oral movement and sustained airflow
- Establishing oral resting postures; the "Speech Zone"
- Generating oral muscle strength and endurance for speech

12:00 -1:00 *Lunch provided*

- Using Stabilization Assists; oral differentiation and refinement tasks
- The Back-Tongue Oral-Motor Matrix: Sequential tasks for /k/, /g/, /ng/, and r.
- The Front-Tongue Oral-Motor Matrix: Sequential tasks for /t/, /d/, /n/, /l/, /s/, "sh," "ch" (frontals and laterals)
- Sound-stim techniques, generalization and carryover

3:30 *Adjourn*